

Cranford House, Half Edge Lane

Manchester



Offers in Region of £200,000

Cranford House

Manchester

Delightful ground floor flat, perfect for first-time buyers or downsizers. Spacious layout, allocated parking, and ample storage. Open plan lounge & dining room, fitted kitchen, and modern appliances. Envidable position between Monton and Ellesmere Park. Excellent transport links. Ready to move in. Council Tax band: B

Tenure: Leasehold

- Perfect First Home or Downsize
- Deceptively Spacious Ground Floor Apartment
- Ready to Move Straight in to and Unpack
- Two Double Bedrooms, Fitted Wardrobes in the Second
- Open Plan Lounge & Dining Room
- Ample Storage Throughout
- Separate Fitted Kitchen
- Fully Electric & Double Glazed Throughout
- Sandwiched Between Monton & Ellesmere Park



Hallway

Ceiling light point and laminate floors.

Lounge

Dimensions: 17' 9" x 12' 7" (5.417m x 3.828m). Double glazed window to the side and rear, ceiling light point, wall mounted radiator and laminate floors.

Kitchen

Dimensions: 9' 4" x 8' 7" (2.851m x 2.625m). Fitted with a range of wall and base units with complimentary roll top work surfaces and integrated stainless steel sink and drainer unit. Integrated electric four ring hob and oven, integrated fridge/freezer and integrated washing machine. Double glazed window to the side, ceiling light point and lino flooring.

Bedroom One

Dimensions: 9' 5" x 13' 2" (2.869m x 4.024m). Double glazed window to the rear, ceiling light point, wall mounted radiator and laminate floors.

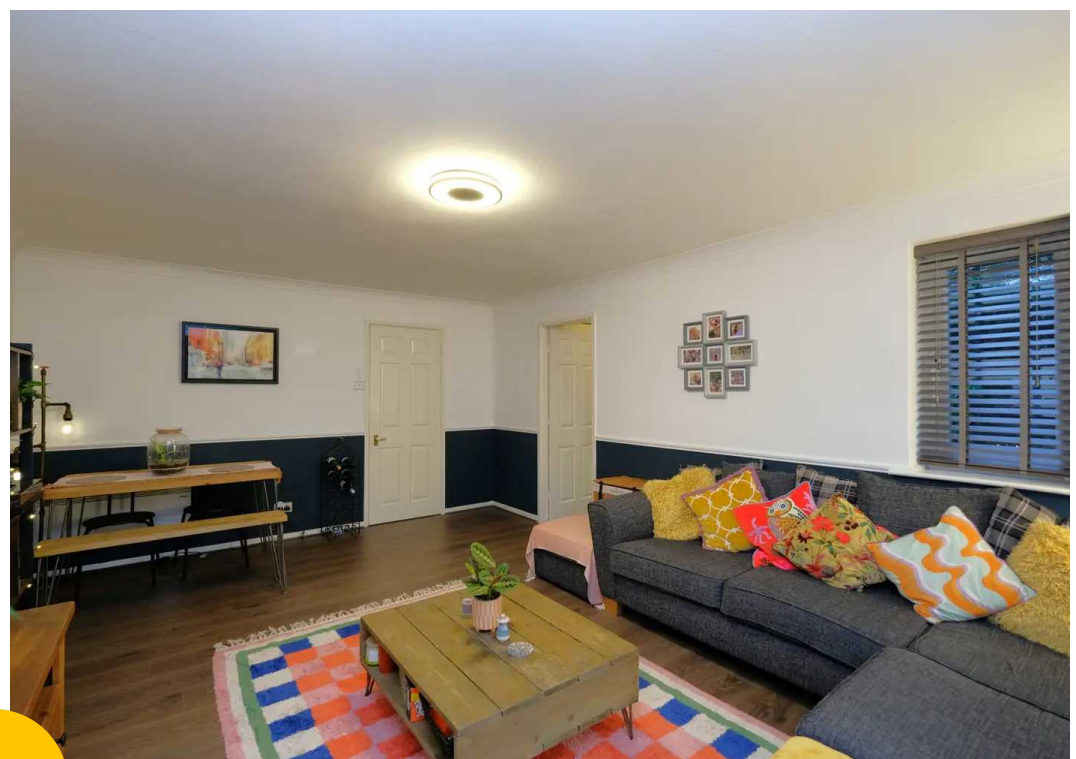
Bedroom Two

Dimensions: 9' 3" x 13' 3" (2.812m x 4.027m). Double glazed window to the side, ceiling light point, wall mounted radiator, built in wardrobes and laminate floors.

Bathroom

Dimensions: 9' 2" x 6' 10" (2.801m x 2.091m). Fitted three piece suite comprising of low level WC, pedestal hand wash basin and bath with shower over. Double glazed window to the side, ceiling light point, wall mounted radiator, tiled walls and tiled floors.





HILLS







Hills | Salfords Estate Agent

Hills Residential, Sentinel House Albert Street - M30 0SS

0161 707 4900

sales@hills.agency

www.hills.agency/



THE PROPERTY MISDESCRIPTIONS ACT 1991 The Agent has not tested any apparatus, equipment, fixtures and fittings or services and so cannot verify that they are in working order or fit for the purpose. A Buyer is advised to obtain verification from their Solicitor or Surveyor. References to the Tenure of a Property are based on information supplied by the Seller. The Agent has not had sight of the title documents. A Buyer is advised to obtain verification from their Solicitor. You are advised to check the availability of this property before travelling any distance to view. Every effort and precaution has been made to ensure these particulars are correct and not misleading but their accuracy is not guaranteed nor do they form part of any contract. If there is any point which is of particular importance to you, please contact us and we will provide any information you require. This is advisable, particularly if you intend to travel some distance to view the property. The mention of any appliances and services within these details does not imply that they are in full and efficient working order. These particulars are in draft form awaiting Vendors confirmation of their accuracy. These details must therefore be taken as a guide only.