



Garden Street, Eccles

Manchester



Offers Over £140,000



# Garden Street

Eccles, Manchester

Charming two bed terraced house in popular area, perfect for first-time buyers or investors. Spacious lounge, fitted kitchen, utility space, 2 generous bedrooms. Modern shower room, downstairs wet room. Low-maintenance private yard. Close to shops, eateries, and transport links. Book a viewing today!

Council Tax band: A

Tenure: Freehold

- Extended Two Bedroom Terrace Property Offered With No Vendor Chain
- Spacious Lounge
- Fitted Kitchen & Dining Area
- Utility Space
- Two Generous Bedrooms
- Modern Shower Room & Downstairs Wet Room
- Low Maintenance Yard to the Rear
- Situated on a Quiet Cul De Sac Close to Eccles Centre
- Surrounded by an Array of Amenities & Transport Links





### Lounge

12' 5" x 12' 1" (3.78m x 3.68m)

A spacious lounge complete with a ceiling light point, double glazed window and wall mounted radiator. Fitted with laminate flooring.

### Kitchen / Diner

12' 5" x 11' 1" (3.78m x 3.38m)

A bright kitchen featuring fitted wall and base units with and integral stainless steel sink. Gas hob and electric oven. Space for a fridge freezer. Complete with a ceiling light point, double glazed window and wall mounted radiator. Fitted with part tiled walls and laminate flooring.

### Utility

6' 4" x 5' 1" (1.93m x 1.55m)

Featuring a uPVC door and fitted wall units. Space for a washer. Complete with a ceiling light point and cushioned flooring.

### Shower Room

7' 1" x 5' 5" (2.16m x 1.65m)

Featuring an electric shower, hand wash basin and W.C. Complete with a ceiling light point, double glazed window and wall mounted radiator. Fitted with tiled walls.

### Landing

Complete with a ceiling light point and carpet flooring.

### Bedroom One

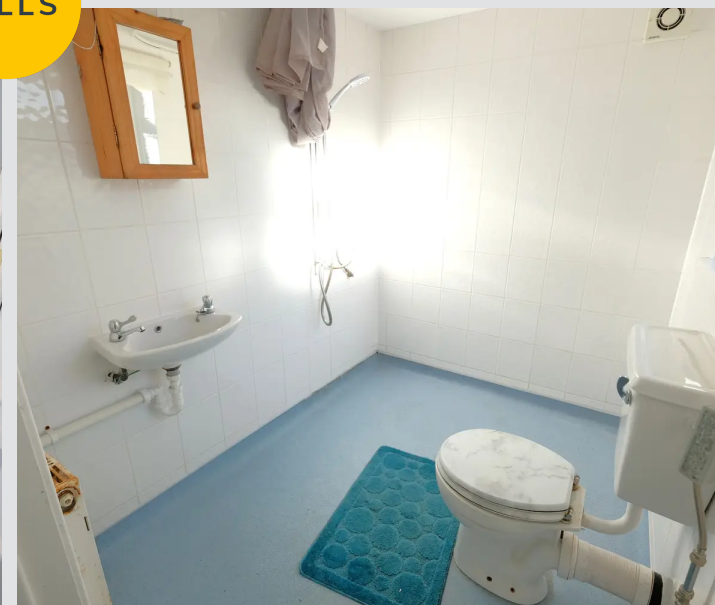
12' 6" x 12' 1" (3.81m x 3.68m)

A large bedroom featuring double built in storage. Complete with a ceiling light point, double glazed window and wall mounted radiator. Fitted with carpet flooring.

### Bedroom Two

11' 2" x 6' 2" (3.40m x 1.88m)

Complete with a ceiling light point, double glazed window and wall mounted radiator. Fitted with carpet flooring.



**Bathroom**

8' 3" x 5' 8" (2.51m x 1.73m)

An L-shaped bathroom featuring an electric shower, hand wash basin and W.C. Complete with a storage cupboard, double glazed window and wall mounted radiator. Fitted with tiled walls and cushioned tiled flooring.

**External**

To the rear of the property is a gated paved yard.



HILLS









## Hills | Salfords Estate Agent

Hills Residential, Sentinel House Albert Street - M30 0SS

0161 707 4900

[sales@hills.agency](mailto:sales@hills.agency)

[www.hills.agency/](http://www.hills.agency/)



THE PROPERTY MISDESCRIPTIONS ACT 1991 The Agent has not tested any apparatus, equipment, fixtures and fittings or services and so cannot verify that they are in working order or fit for the purpose. A Buyer is advised to obtain verification from their Solicitor or Surveyor. References to the Tenure of a Property are based on information supplied by the Seller. The Agent has not had sight of the title documents. A Buyer is advised to obtain verification from their Solicitor. You are advised to check the availability of this property before travelling any distance to view. Every effort and precaution has been made to ensure these particulars are correct and not misleading but their accuracy is not guaranteed nor do they form part of any contract. If there is any point which is of particular importance to you, please contact us and we will provide any information you require. This is advisable, particularly if you intend to travel some distance to view the property. The mention of any appliances and services within these details does not imply that they are in full and efficient working order. These particulars are in draft form awaiting Vendors confirmation of their accuracy. These details must therefore be taken as a guide only.