



Dean Road, Cadishead

Manchester



In Excess of £130,000

Dean Road

Cadishead, Manchester

Exceptionally spacious two bedroom penthouse with 18ft master bedroom and an impressive 26ft modern open plan kitchen, living & dining space.

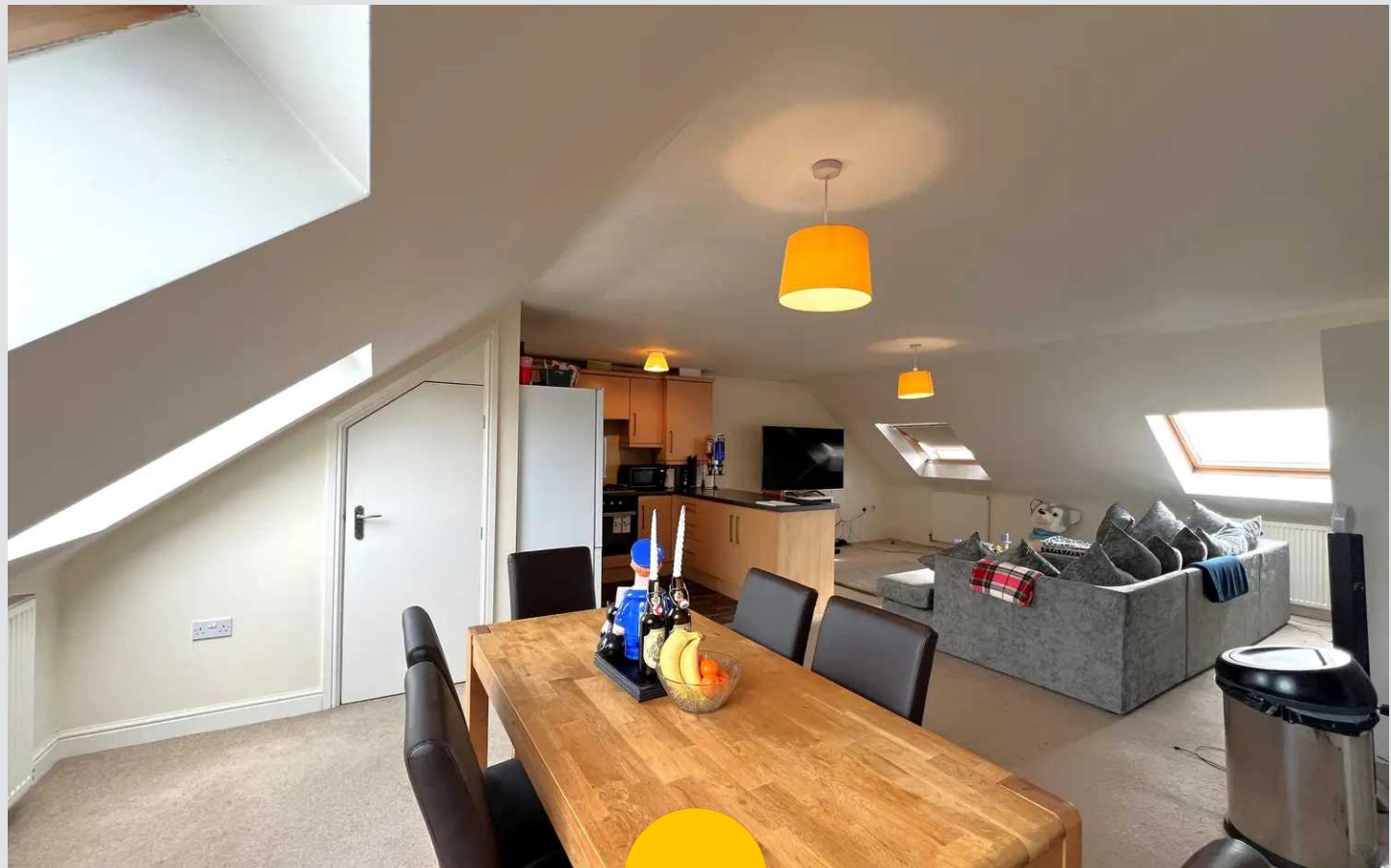
Fitted bathroom, ample storage, and natural light.

Allocated parking, communal gardens. Ideal for first-time buyers and investors. Low service charges and prime location!

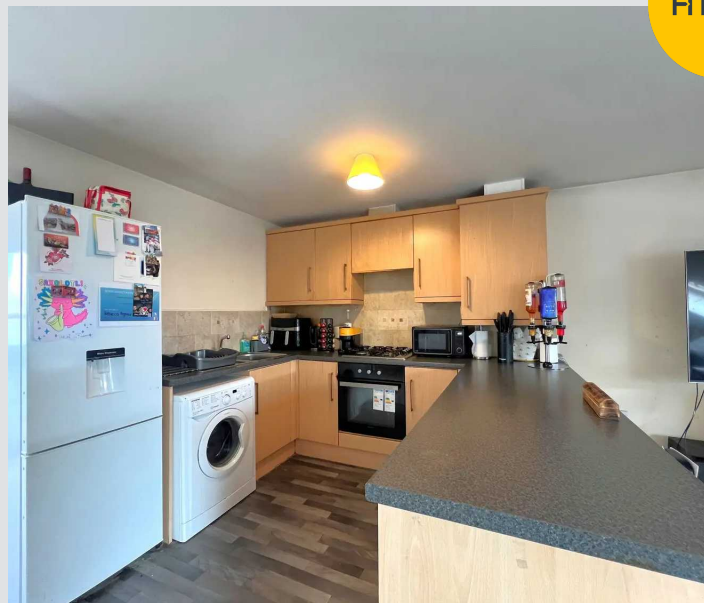
Council Tax band: B

Tenure: Leasehold

- Fabulous Pent House Apartment Laid Over the Full Second Floor
- 18ft Master Bedroom & Second Generous Double
- Impressive 26ft Open Plan Modern Kitchen, Living & Dining Space. Perfect for Hosting Guests
- Three Piece Fitted Bathroom Suite, with Shower over the Bath Tub
- Ample Storage with Loft Space & Storage Room
- Allocated Parking Space
- Well Kept Communal Areas & Gardens
- Perfect First Buy Or Investment To Add To Ones Portfolio
- Excellently Located Close to Amenities & Transport Links
- Low Service Charges & Ground Rent



HILLS



Entrance Hallway

Complete with a ceiling light point and carpet flooring.

Lounge

26' 6" x 22' 1" (8.08m x 6.73m)

A spacious lounge complete with two ceiling light points, four Velux windows and four wall mounted radiators. Fitted with carpet flooring. Storage cupboard (7'4" x 5'8"). Loft access.

Kitchen

8' 9" x 7' 7" (2.67m x 2.31m)

A contemporary kitchen featuring fitted units and stainless steel sink. Space for a washer, fridge freezer and cooker. Fitted with a ceiling light point, tiled walls and lino flooring. Boiler.

Bedroom One

18' 0" x 13' 2" (5.49m x 4.01m)

Complete with a ceiling light point, two Velux windows and wall mounted radiator. Fitted with carpet flooring.

Bedroom Two

14' 2" x 13' 1" (4.32m x 3.99m)

Complete with a ceiling light point, Velux window and wall mounted radiator. Fitted with carpet flooring.

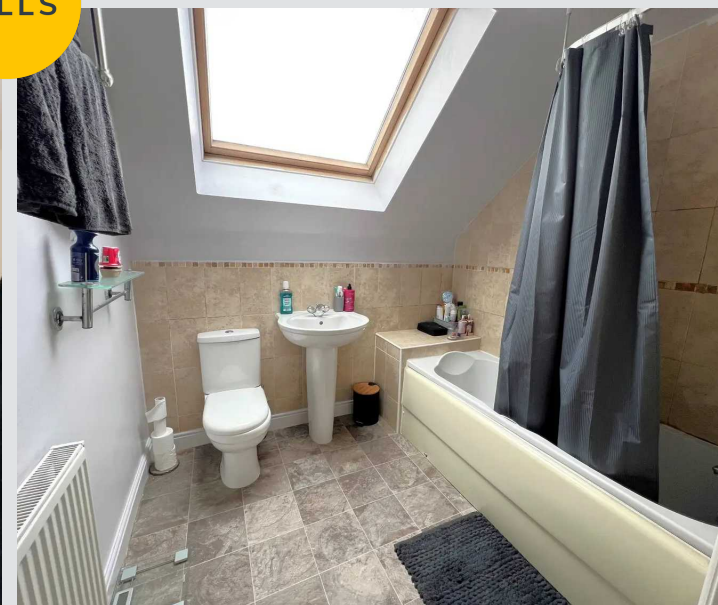
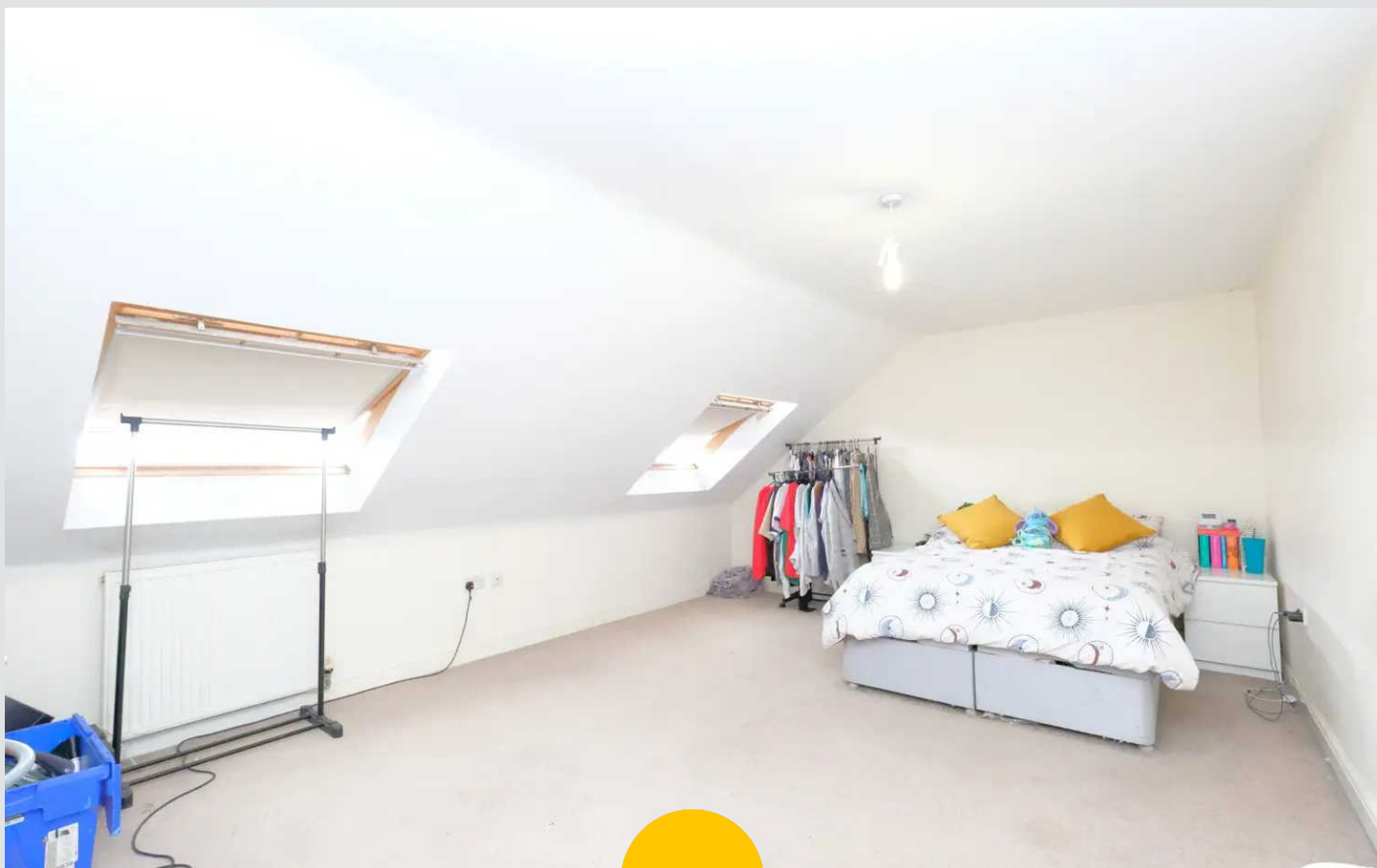
Bathroom

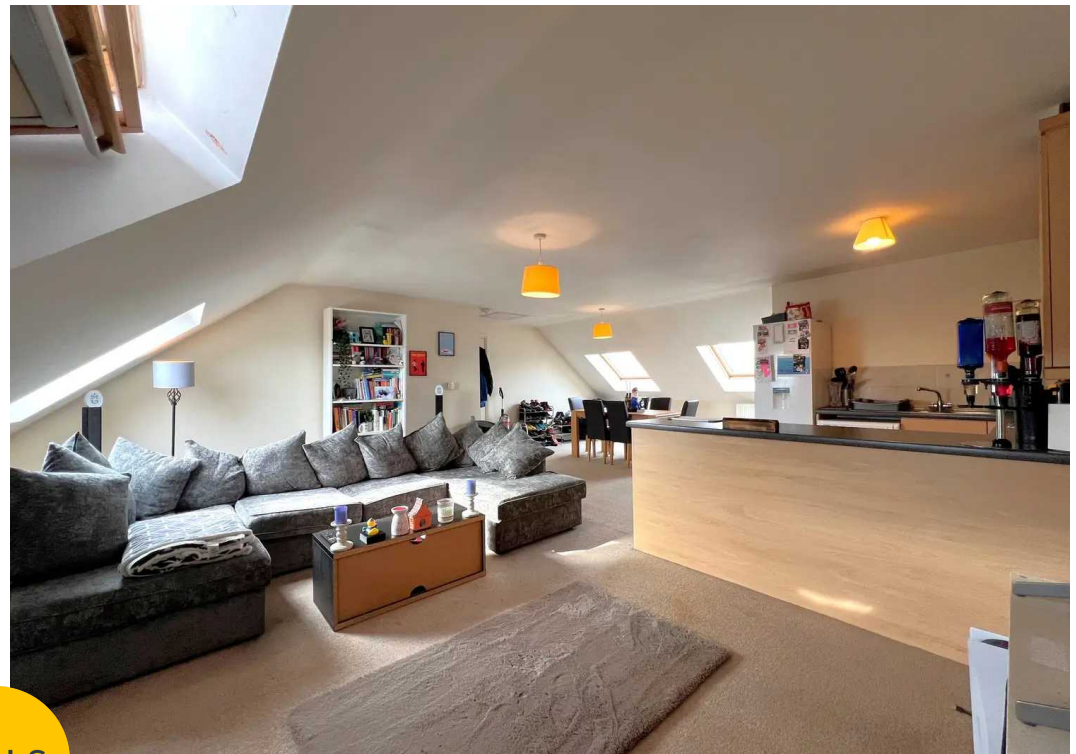
6' 8" x 7' 5" (2.03m x 2.26m)

Featuring a three-piece suite including a bath with shower over, hand wash basin and W.C. Complete with a ceiling light point, Velux window and wall mounted radiator. Fitted with lino tiled flooring.

External

Complete with communal gardens and parking space behind flats.





HILLS







Hills | Salfords Estate Agent

Hills Residential, Sentinel House Albert Street – M30 0SS

0161 707 4900

sales@hills.agency

www.hills.agency/



THE PROPERTY MISDESCRIPTIONS ACT 1991 The Agent has not tested any apparatus, equipment, fixtures and fittings or services and so cannot verify that they are in working order or fit for the purpose. A Buyer is advised to obtain verification from their Solicitor or Surveyor. References to the Tenure of a Property are based on information supplied by the Seller. The Agent has not had sight of the title documents. A Buyer is advised to obtain verification from their Solicitor. You are advised to check the availability of this property before travelling any distance to view. Every effort and precaution has been made to ensure these particulars are correct and not misleading but their accuracy is not guaranteed nor do they form part of any contract. If there is any point which is of particular importance to you, please contact us and we will provide any information you require. This is advisable, particularly if you intend to travel some distance to view the property. The mention of any appliances and services within these details does not imply that they are in full and efficient working order. These particulars are in draft form awaiting Vendors confirmation of their accuracy. These details must therefore be taken as a guide only.